



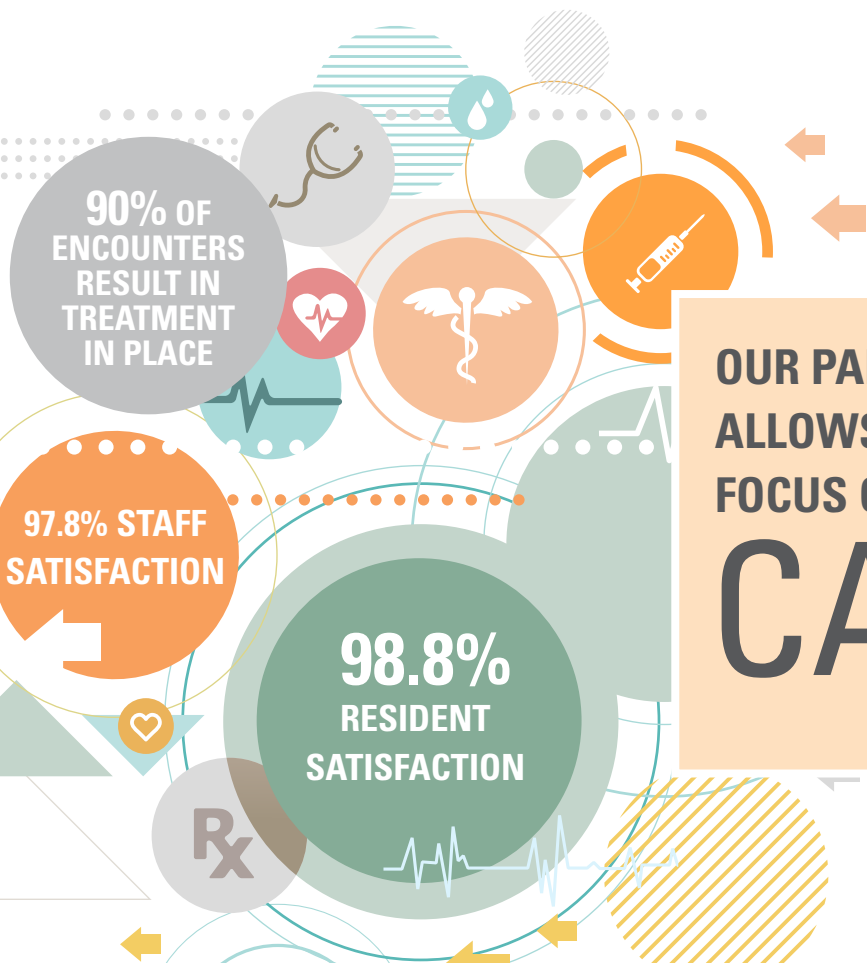
Keeping Residents Happy and Healthy

Avera eCARE[®] Senior Care

Avera eCARE[®] Senior Care uses two-way audio and visual telemedicine technology to connect residents in skilled nursing facilities and senior living communities with the health care services they need – without leaving their familiar home environment.

YOUR TEAM CAN RELY ON 24/7 ACCESS TO:

- Geriatric-trained specialists
- Care transitions
- Behavioral health support
- Patient encounter reporting
- Evidence-based protocols
- Site-specific enhanced training
- Advance care planning support
- Discharge follow up



**OUR PARTNERSHIP
ALLOWS YOU TO
FOCUS ON RESIDENT
CARE.**

- Clinical staff requests support
- Mobile video cart provides easy access to resident
- eCARE Senior Care staff assess needs
- Access to EMR data and full health history
- Care is provided and encounter documentation is given to primary care physician

Avera eCARE[®]
Senior Care

Discover the possibilities
AveraeCARE.org/seniorcareservices
877-261-5710