








Partner with World-Class Expertise Avera eCARE[®] Emergency

Avera eCARE[®] Emergency

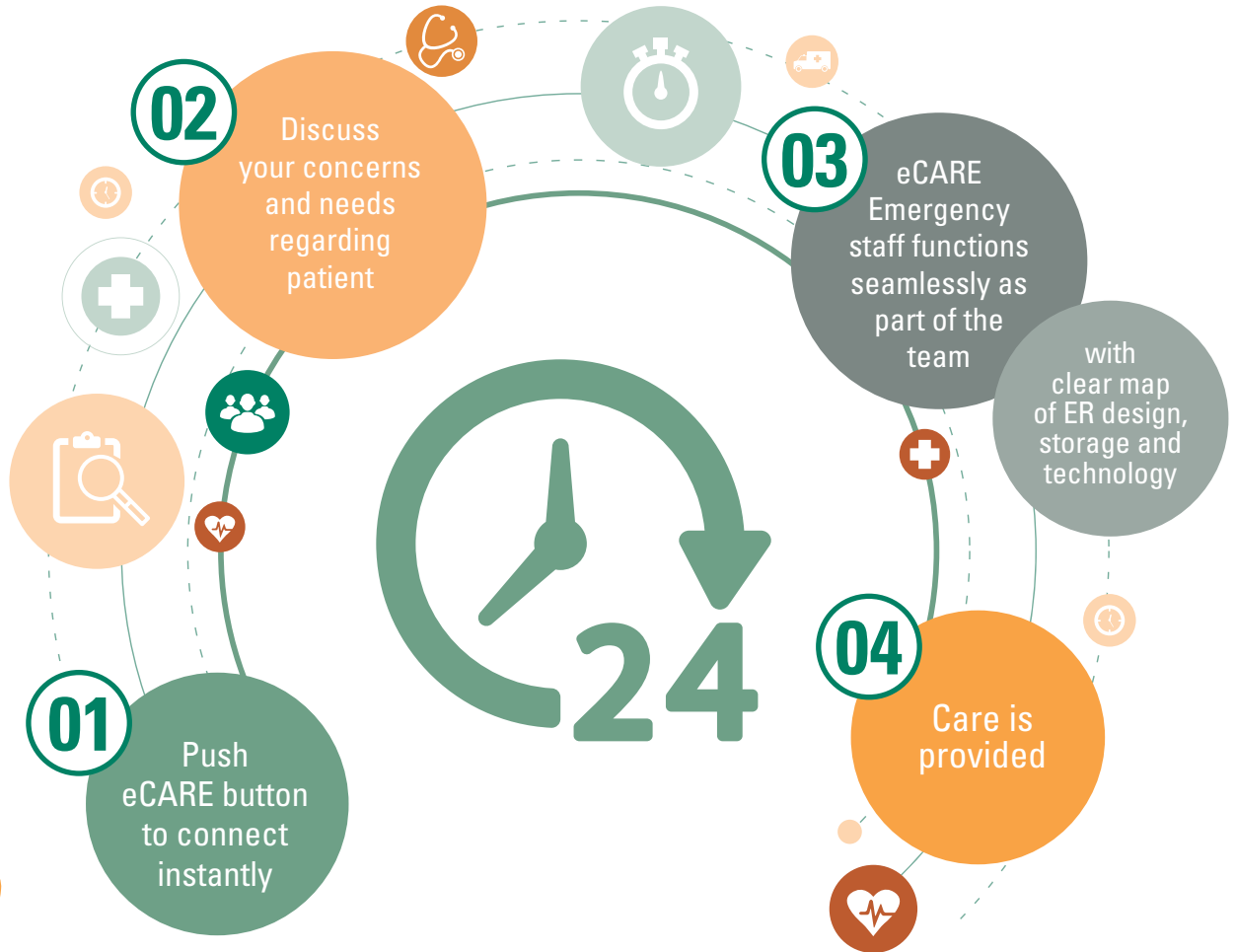
board-certified emergency physicians and nurses are available as little or as often as you need. Just push the button for on-demand connectivity.

OUR PARTNERSHIP STREAMLINES EMERGENCY CARE ANY TIME OF DAY.

YOUR MEDICAL TEAM CAN RELY ON 24/7 ASSISTANCE FOR:

-  Complex medical cases or multiple traumas
-  Ordering diagnostic tests
-  Patient care until bedside provider arrives
-  Expediting air ambulance transfers
-  Nurse documentation

**Timelier treatment with hub physician available
21 minutes sooner**



Avera eCARE[®]
Emergency

Discover the possibilities
AveraeCARE.org/hellofuture
877-261-5710